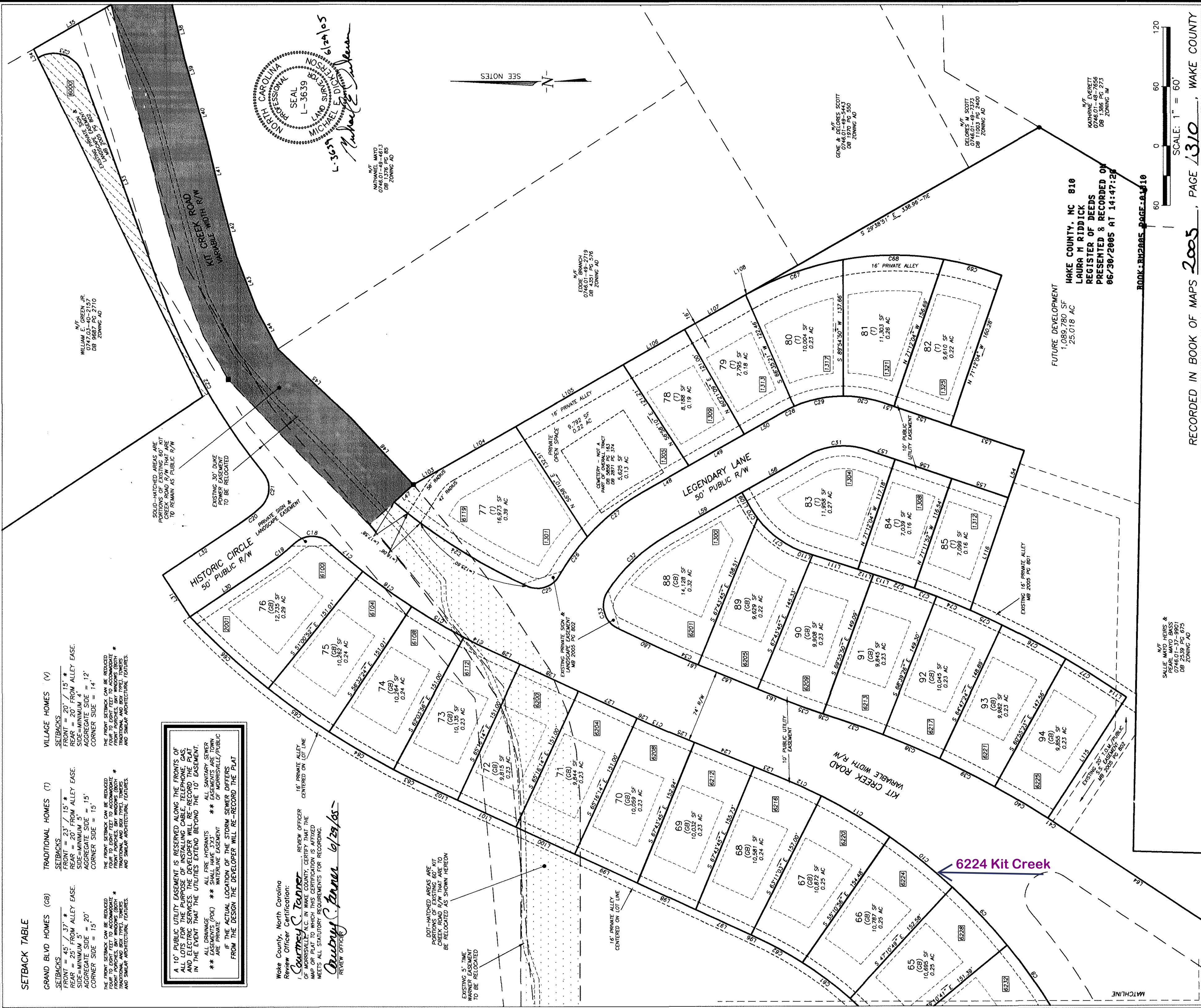


Disclaimer
iMaps makes every effort to produce and publish the most current and accurate information possible. However, the maps are produced for information purposes, and are **NOT** surveys. No warranties, expressed or implied, are provided for the data therein, its use, or its interpretation.



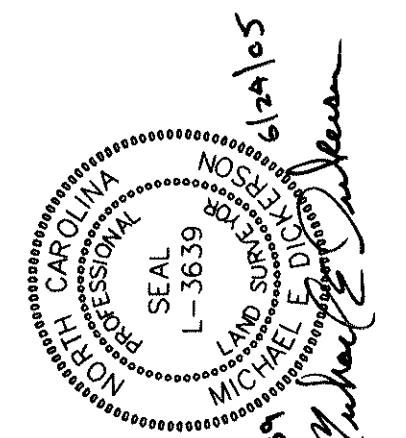
SETBACK TABLE

GRAND BLVD HOMES (GB)	TRADITIONAL HOMES (T)	VILLAGE HOMES (V)
FRONT = 45' / 37' *	FRONT = 23' / 15' *	FRONT = 20' / 15' *
REAR = 25' FROM ALLEY EASE.	REAR = 20' FROM ALLEY EASE.	REAR = 20' FROM ALLEY EASE.
SIDE-MINIMUM 5'	SIDE-MINIMUM 5'	SIDE-MINIMUM 4'
AGGREGATE SIDE = 20'	AGGREGATE SIDE = 15'	AGGREGATE SIDE = 12'
CORNER SIDE = 15'	CORNER SIDE = 15'	CORNER SIDE = 14'
* THE FRONT SETBACK CAN BE REDUCED FOUR TO EIGHT FEET TO ACCOMMODATE TRADITIONAL AND BOX TYPED TOWERS AND SIMILAR ARCHITECTURAL FEATURES.		

A 10' PUBLIC UTILITY EASEMENT IS RESERVED ALONG THE FRONTS OF ALL LOTS FOR THE PURPOSE OF INSTALLING CABLE, TELEPHONE, GAS, AND ELECTRIC SERVICES. THE DEVELOPER WILL RE-RECORD THE PLAT IN THE EVENT THAT THE UTILITIES EXTEND BEYOND THE 10' EASEMENT.

ALL DRAWINGS SHALL HAVE EASEMENTS ARE TOWN ALL EASEMENTS (PDE) ** SHALL HAVE EASEMENTS ARE TOWN ARE THE ACTUAL LOCATION OF THE STORM SEWER OR STORM DRAIN FROM THE DESIGN. THE DEVELOPER WILL RE-RECORD THE PLAT

Wake County, North Carolina
 Review Officer Certification:
 Courtney S. Turner
 REVIEW OFFICER
 I, COURTNEY S. TURNER, REVIEW OFFICER FOR WAKE COUNTY, CERTIFY THAT THIS MAP OR PLAT TO WHICH THIS CERTIFICATION IS AFFIXED MEETS ALL STATUTORY REQUIREMENTS FOR RECORDING.
 Courtney S. Turner 6/29/05
 REVIEW OFFICER



NATHANIEL MAYO
 0746.01-48-4613
 DB 1386 PG 273
 ZONING AD

N/E
 EDDIE BRANCH
 0746.01-48-2719
 DB 1386 PG 273
 ZONING AD

N/E
 GENE A. WILKES SCOTT
 0746.01-48-5443
 DB 1970 PG 580
 ZONING AD

N/E
 DELORES M. SCOTT
 0746.01-48-2400
 DB 1386 PG 273
 ZONING AD

N/E
 KATHARINE EVERETT
 0746.01-48-7656
 DB 1386 PG 273
 ZONING AD

N/E
 SALLIE MAYO HEIRS &
 0746.01-37-9901
 DB 2539 PG 675
 ZONING AD

FUTURE DEVELOPMENT
 1,089,780 SF
 25.018 AC
 MAKE COUNTY, NC 810
 LAURA M RIDDICK
 REGISTER OF DEEDS
 PRESENTED & RECORDED ON
 06/30/2005 AT 14:47:25

BOOK-RM2005 PAGE-8310



KITTS CREEK SUBDIVISION
 PHASE 1A REVISED
 OWNER: KCR INVESTORS LLC
 WAKE COUNTY
 CEDAR FORK TOWNSHIP
 SUBDIVISION & RECOMBINATION PLAT

WITHERS & RAVENEL
 ENGINEERS | PLANNERS | SURVEYORS
 111 MacKenen Drive Cary, North Carolina 27511 www.wITHERSRAVENEL.com
 tel: 919-469-3340 fax: 919-467-6008

NO.	DATE	DESCRIPTION	BY:

DATE: 6/24/05	SCALE: 1" = 60'
DRAWN: MED	CHECKED: MED
SHEET: 4 OF 4	
CAD FILE: BD 05104	
PROJECT NO: 202081	